

A CURATED COMMUNITY

The Comfort of KOS in collaboration with Ste Marie Studio

The Kootenays' Scandinavian heritage inspires the warm, contemporary comfort of The Daly's 94 three-, two- and one-bedroom alpine residences, each with its own private deck. Nordic-inspired interiors provide Kos, a cozy, understated comfort

for calm moments between outdoor exhilaration. Interiors combine rich woods, tonal textures and tactile materials that look and feel right in every alpine season. Always, grand windows and outdoor decks keep nature close at hand.

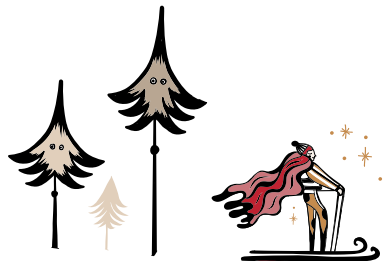
YOUR BUILDING

Indoor-Outdoor Wellbeing

- Welcoming lounge spaces for socializing with friends old and new, or for quiet moments connecting with nature through the full-scale windows.
- Fitness facility with cardio equipment and a stretch zone for before and after long days in the alpine
- Traditional dry sauna calms mind and body
- Outdoor pool and hot tub
- BBQ stations with adjacent dining areas and fire-pit

Bike and Ski Storage

Dedicated spaces go well beyond just gear storage: There's a place to wash your bike and even a bench for doing a quick tune or wax.



THE HOME

Smart Features

- Smart controls for entry doors
- Dedicated in-suite owner lock-off area
- Wifi in common areas

Sustainability Features

The Daly has been designed and will be constructed with our environment in mind.

Features include:

- High-efficiency heating & cooling for each home
- Low flow, efficient water fixtures
- Native landscaping to minimize resource use
- Underground parking with shared EV charging facilities

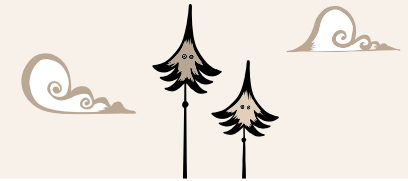
Bathrooms

- LED backlit mirrors for modern, functional lighting
- Quality fixtures and sleek faucets to coordinate with your choice of colour palette
- NuHeat in-floor heating

Warranties mean ownership with confidence

The Daly is delivered with comprehensive new home warranty protection from WBI including:

- 2-Year Material Warranty
- 5-Year Building Envelope Warranty
- 10-Year Structural Defects Warranty



Interiors

All homeowners will have the choice of light or dark finishings palette:

Champagne

Light wood colour, refined millwork, textural tiles, and polished chrome.

Corduroy

Rich wood colour, refined millwork, textural tiles, and polished chrome.

Your Home

- Zoned for nightly rental
- Premium wide plank laminate flooring throughout
- Convenient built-in closet details
- All homes offer private balconies to maximize outdoor living
- In-suite homeowner lockers
- Roller shades throughout the home

Appliances

In A1, A2 and B1 Homes

- 24" Integrated Fulgor Milano Fridge
- 24" Fulgor Milano Radiant Cooktop
- 24" Fulgor Milano Convection Wall Oven
- 24" Combination Microwave Hood Fan
- Integrated Fulgor Milano Dishwasher
- High-Efficiency Blomberg Washer & Heat Pump Dryer

In B2, B3, B4, B5, B6, C1 and C2 Homes

- 30" Integrated Fulgor Milano Fridge
- 30" Fulgor Milano Radiant Cooktop
- 30" Fulgor Milano Convection Wall Oven
- 30" Fulgor Milano Microwave
- 30" Faber Hood Fan
- Integrated Fulgor Milano Dishwasher
- High-Efficiency Blomberg Washer & Heat Pump Dryer

In B2, B6, C1 and C2

- Under-the-Counter Beverage Fridge