



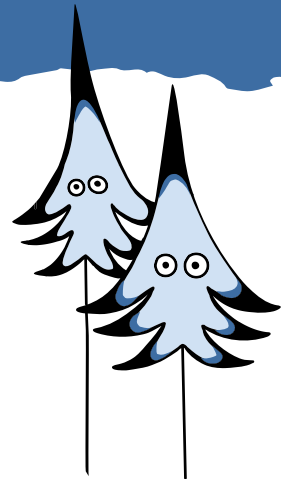
THE DALY 
A RED MOUNTAIN HOME

SAY HELLO TO THE DALY

We're proud and excited to introduce The Daly! A sister to The Crescent, The Daly is part of the family but designed to answer a demand for larger alpine homes that accommodate families and groups of friends. Like The Crescent, it's located at the base of RED, steps from year-round mountain adventure, the day lodge, Rafters bar and The Josie hotel.

The Daly makes ownership easy. You can choose to live at RED full or part-time. You may also choose from a range of nightly rental options that will keep your home gainfully occupied when you're not at RED.

- * 94 three, two and one-bedroom residences, each with a private deck
- * Approximately 510 to 1200 square feet of indoor living
- * Comfortable, Scandinavian-inspired gathering spaces
- * Indoor/Outdoor Wellness Zone with gym, stretch, and sauna opening onto a year-round outdoor pool and hot tub
- * Outdoor grills and fire pit





MRS. DALY, THE PIONEER

While The Crescent was named for the legendary Rossland women's hockey team of yore, The Daly honours the players' indomitable benefactor. The feisty women who dared play hockey in the Kootenays in the early 1900s were pitched as a novelty act of the Winter Carnival and forced to pay 50 cents for the privilege of playing. Then The Crescents became unbeatable for two decades, a powerhouse in bloomers and skirts. A photo of the period shows Mrs. Daly in a broad-brimmed hat, warm furs, and the calm, relaxed smile of a woman who knows her place. With the winners.



A RED FOR ALL

The Daly is part of RED Mountain Homes, a limited collection of neighbourhoods created by adventurers for adventurers. Like all RED Mountain Homes, The Daly offers contemporary alpine homes, walkable streets and easy access to lifts and trails. And like its neighbours, The Daly grows from the essence of mountain culture—the Kootenays’ Scandinavian heritage of shared alpine cabins and *Friluftsliv*, an undying enthusiasm for year-round outdoor adventure.

RED Mountain Homes neighbourhoods are a seven-minute drive from historic Rosslund, 30 minutes from Trail Regional Airport and an easy two-and-a-half hour drive from Spokane. That makes them just close enough to be really accessible, and exactly far enough away to be true sanctuaries.



THE COMFORT OF KOS

RED Mountain Homes designs mountain living that celebrates our soaring alpine landscape, our proud Kootenay culture and the sturdy charm of the Norsemen.

Contemporary interiors reflect *Kos*, a Norwegian word for the cozy, understated comfort of calm moments after outdoor exhilaration.

Rich woods, exciting materials and uncommon textures feel warm when winter storms howl and cool on balmy summer evenings. Always, grand windows and outdoor decks keep nature close at hand.



- * Warm Accents
- * Cozy Social Zones
- * Natural Wellness
- * Elevated Comfort





TAKE THE PLUNGE

The elements are never far away at The Daly, and well-being is by design. Amenities gather neighbours together in shared appreciation of the *après* life.

The outdoor pool and hot tub are a stroll away from the Wellness Zone: hit the gym or stretch before or after a day of alpine adventure; try a traditional dry sauna, an invitation to a deeper calm; and for an invigorating burst, jump in the snow before taking a plunge in the pool.

The main pool, steaming in winter and cool in summer, becomes the key to a year-round wellness ritual that connects sense and sensation.

A CURATED COMMUNITY – FINISHES

KOS comes to life in collaboration with Ste Marie Studio.

Choice—of trails, of sports, and of finishings—is one of the pleasures of mountain life. Nordic-inspired interiors create a cozy, understated comfort for calm moments of togetherness after the exhilaration of the outdoors—a feeling the Norwegians call *Kos*.

Our interiors combine rich woods, tonal textures and tactile materials that look and feel right in every alpine season. Always, grand windows and outdoor decks keep nature close at hand.

All homeowners will have the choice of light or dark finishings palette:

CHAMPAGNE

Light wood colour, refined millwork, textural tiles, and polished chrome.

CORDUROY

Rich wood colour, refined millwork, textural tiles, and polished chrome.



Champagne finishings palette



Corduroy finishings palette

A CURATED COMMUNITY – FEATURES

THE HOME

Smart Features

- Smart controls for entry doors
- Dedicated in-suite owner lock-off area
- Wifi in common areas

Bathrooms

- LED backlit mirrors for modern, functional lighting
- Quality fixtures and sleek faucets to coordinate with your choice of colour palette
- NuHeat in-floor heating

Sustainability Features

The Daly has been designed and will be constructed with our environment in mind.

Features include:

- High-efficiency heating & cooling for each home
- Low flow, efficient water fixtures
- Native landscaping to minimize resource use
- Underground parking with EV charging facilities

Your Home

- Zoned for nightly rental
- Premium wide plank laminate flooring throughout
- Convenient built-in closet details
- All homes offer private balconies to maximize outdoor living
- In-suite homeowner lockers
- Roller shades throughout the home

Appliances

In A1, A2 and B1 Homes

- 24” Integrated Fulgor Milano Fridge
- 24” Fulgor Milano Radiant Cooktop
- 24” Fulgor Milano Convection Wall Oven
- 24” Fulgor Milano Combination Microwave Hood Fan
- Integrated Fulgor Milano Dishwasher
- High-Efficiency Blomberg Washer & Heat Pump Dryer

In B2, B3, B4, B5, B6, C1 and C2 Homes

- 30” Integrated Fulgor Milano Fridge
- 30” Fulgor Milano Radiant Cooktop
- 30” Fulgor Milano Convection Wall Oven
- 30” Fulgor Milano Microwave
- 30” Faber Hood Fan
- Integrated Fulgor Milano Dishwasher
- High-Efficiency Blomberg Washer & Heat Pump Dryer

In B2, B6, C1 and C2

- Under-the-Counter Beverage Fridge

Warranties mean ownership with confidence

- 2-Year Material Warranty
- 5-Year Building Envelope Warranty
- 10-Year Structural Defects Warranty



A RED FOR ALL SEASONS

Settlers to the Kootenays came for the gold, silver and copper, but those who stayed a while, particularly Norsemen like Olaus Jeldness, mined the seasons—deep, deep winter snow, golden autumns, brilliant alpine springs and bluebird summers. Jeldness, charismatic, entrepreneurial and the father of competitive skiing, forever shaped the culture and spirit of RED. Today, the four seasons of mountain life are celebrated in ways he could have scarcely imagined, but that he would surely approve.

Those who followed in the footsteps of Jeldness have made RED, Rossland and the Kootenays a year-round playground for lovers of the outdoors: skiers and golfers, hikers who admire alpine viewpoints, trail runners who sweat to the summits and mountain bikers who fly to the base. And also for friends who celebrate on Rossland patios, cheering everyone on. Winter and summer, there's a RED for you.



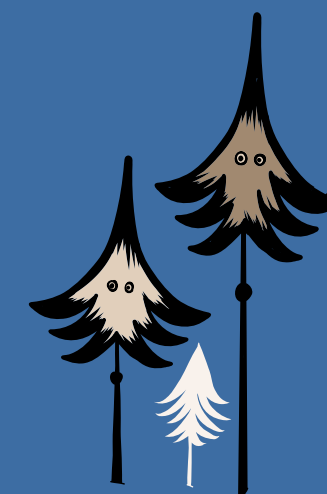


LIVE AT RED MOUNTAIN HOMES

As RED Mountain grows, and new neighbourhoods join The Crescent, The Daly, The Glades and Caldera, RED Mountain Homes will welcome more of the adventurers who share our community's love of mountain living—every trail, every turn, every sunrise and snowfall.

The Daly is our first offering of larger mountain homes, and its location will put you, your friends and family within effortless reach of everything you love about mountain life.

It's a great opportunity.



THE DALY FLOORPLANS



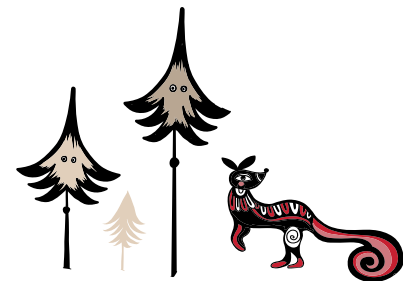
A1

1 Bed, 1 Bath

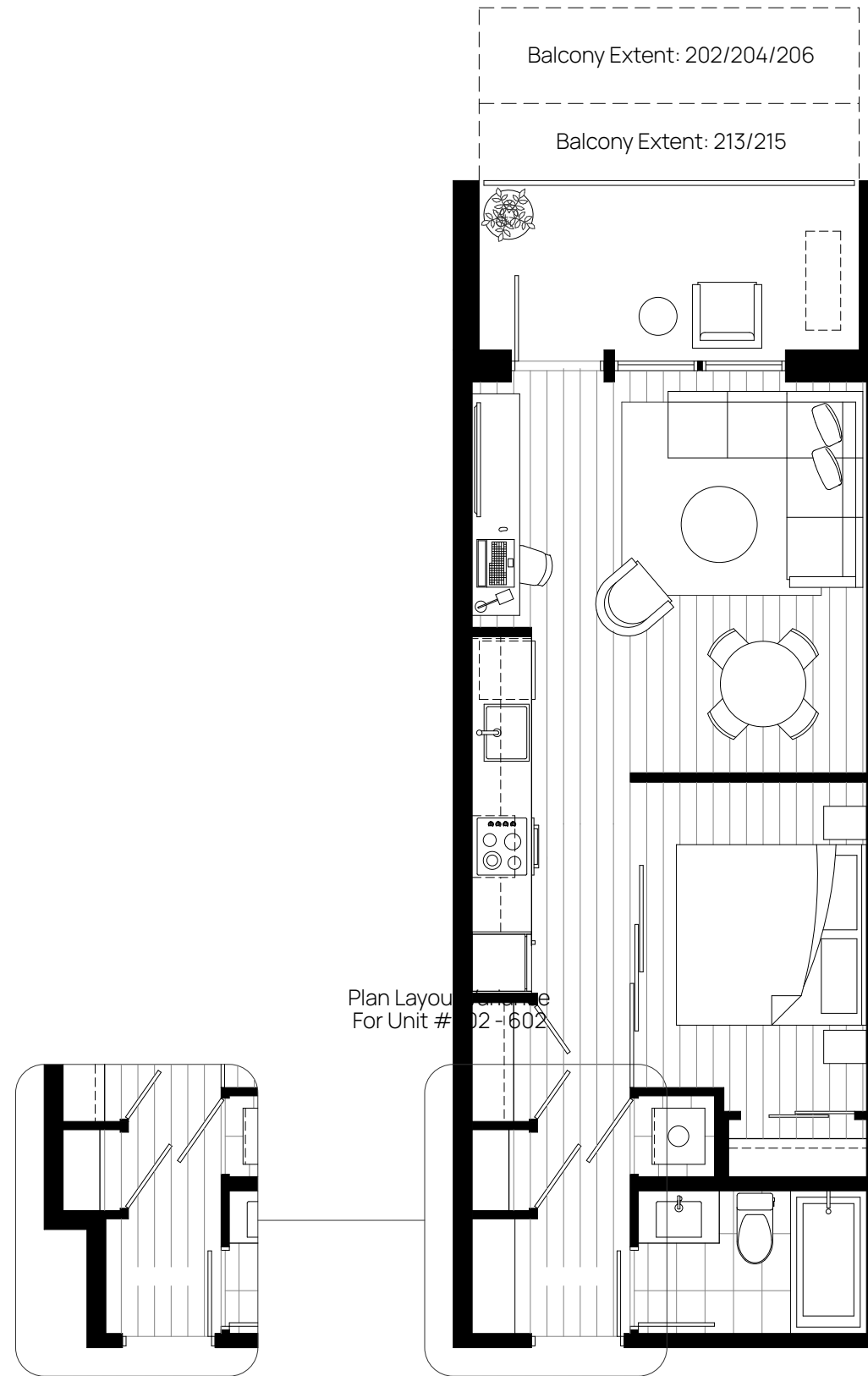
Interior 508 sqft

Exterior 79-167 sqft

Total 587-675 sqft



E. & O. E. This is not an offering for sale. Any such offering may only be made with a Disclosure Statement. The developer reserves the right to modify or change plans, specifications, features, materials and prices without notice and at the developer's sole discretion. While we strive for accuracy, all measurements are approximate and are based on the architectural plans. Renderings are conceptual and are intended as a general reference only. Price ranges are estimated with best accuracy at time of publication, exclude taxes, are subject to availability at time of purchase, and are subject to change.



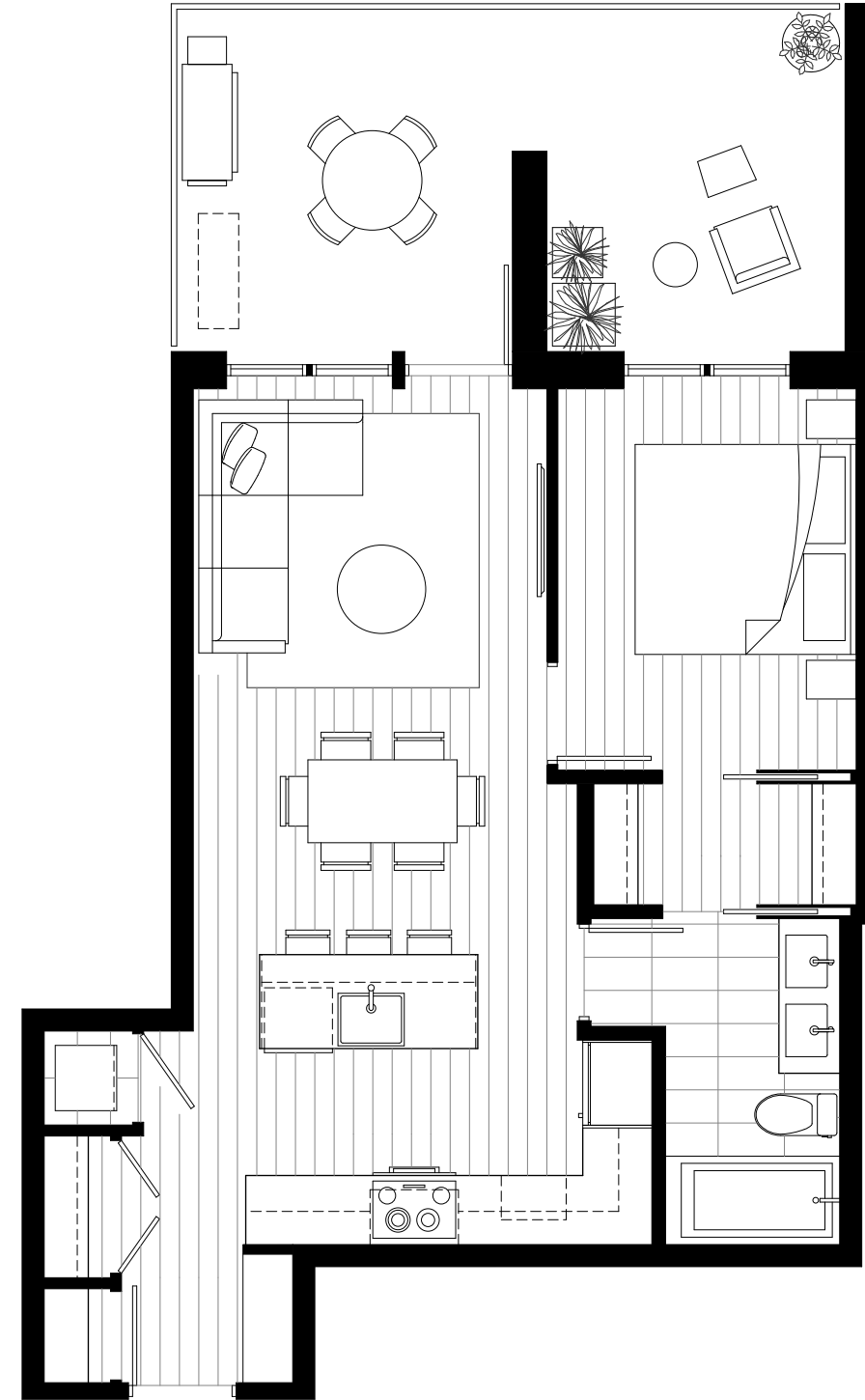
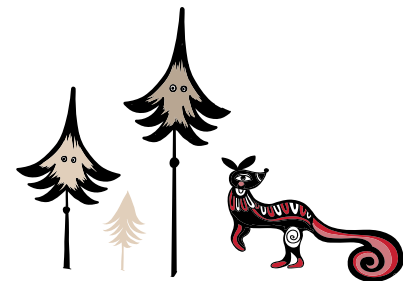
A2

1 Bed, 1 Bath

Interior 645 sqft

Exterior 204 sqft

Total 849 sqft



E. & O. E. This is not an offering for sale. Any such offering may only be made with a Disclosure Statement. The developer reserves the right to modify or change plans, specifications, features, materials and prices without notice and at the developer's sole discretion. While we strive for accuracy, all measurements are approximate and are based on the architectural plans. Renderings are conceptual and are intended as a general reference only. Price ranges are estimated with best accuracy at time of publication, exclude taxes, are subject to availability at time of purchase, and are subject to change.

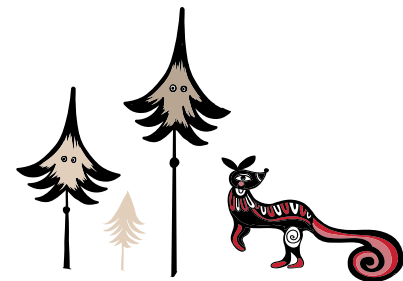
B1

2 Bed, 2 Bath

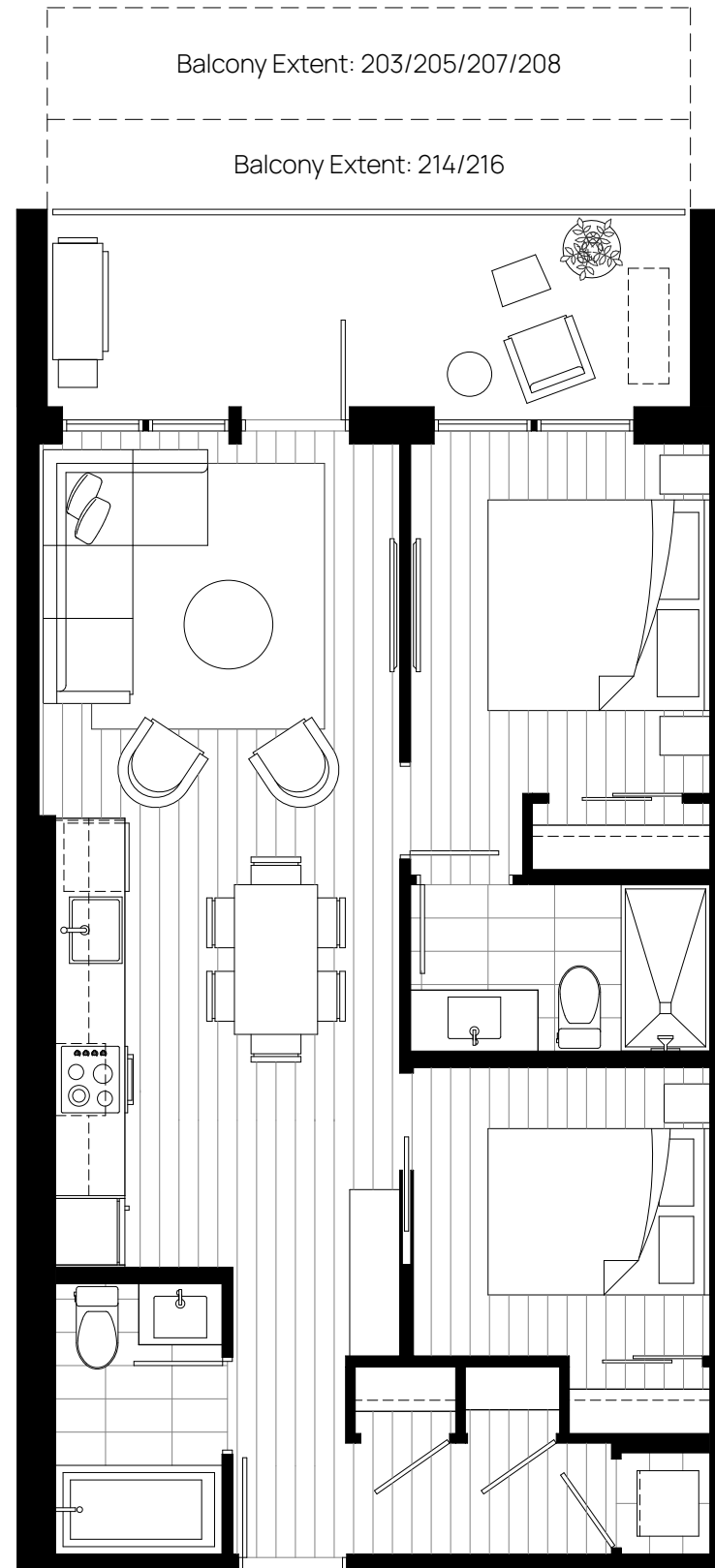
Interior 718 sqft

Exterior 113-239 sqft

Total 831-957 sqft



E. & O. E. This is not an offering for sale. Any such offering may only be made with a Disclosure Statement. The developer reserves the right to modify or change plans, specifications, features, materials and prices without notice and at the developer's sole discretion. While we strive for accuracy, all measurements are approximate and are based on the architectural plans. Renderings are conceptual and are intended as a general reference only. Price ranges are estimated with best accuracy at time of publication, exclude taxes, are subject to availability at time of purchase, and are subject to change.



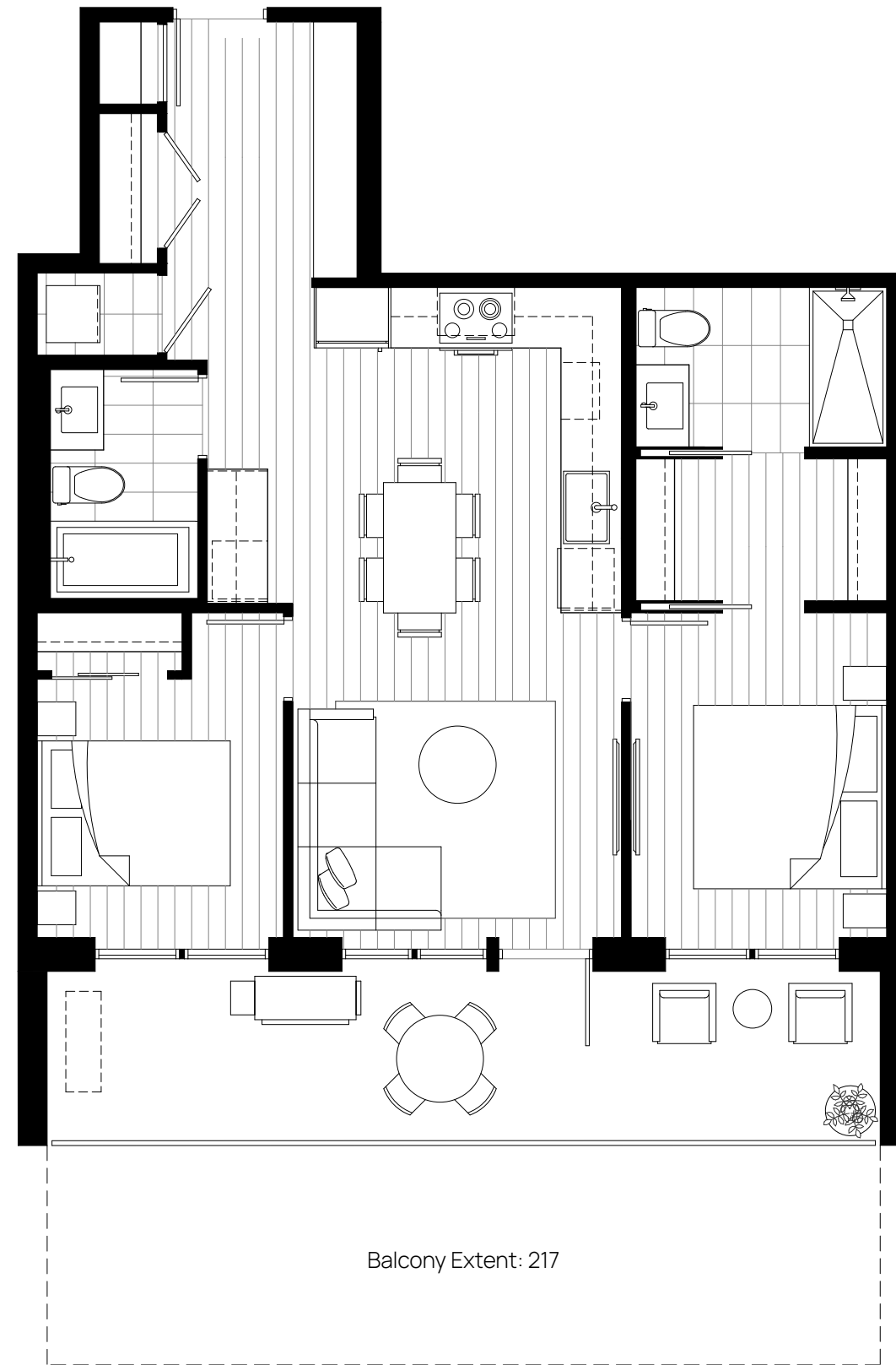
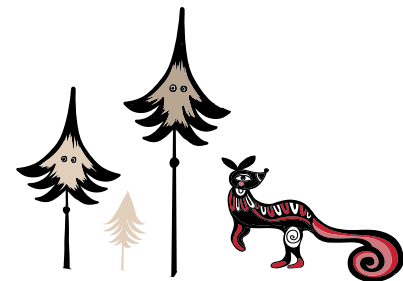
B2

2 Bed, 2 Bath

Interior 800 sqft

Exterior 172-400 sqft

Total 972-1200 sqft



E. & O. E. This is not an offering for sale. Any such offering may only be made with a Disclosure Statement. The developer reserves the right to modify or change plans, specifications, features, materials and prices without notice and at the developer's sole discretion. While we strive for accuracy, all measurements are approximate and are based on the architectural plans. Renderings are conceptual and are intended as a general reference only. Price ranges are estimated with best accuracy at time of publication, exclude taxes, are subject to availability at time of purchase, and are subject to change.

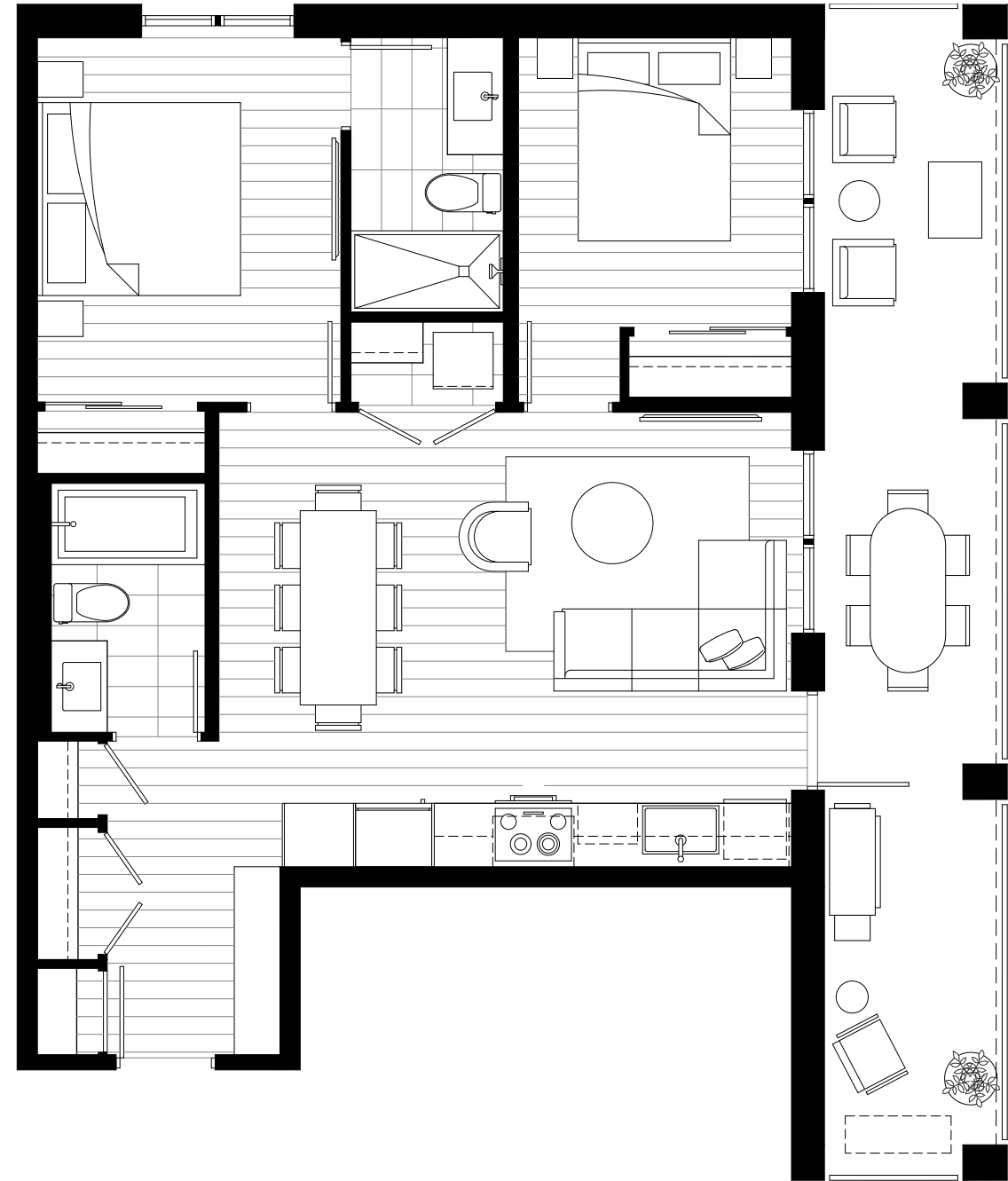
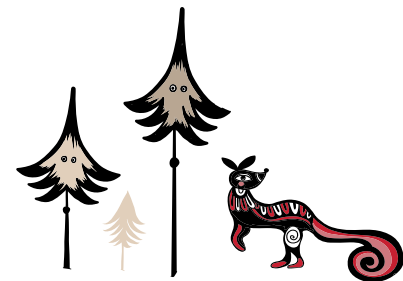
B3

2 Bed, 2 Bath

Interior 802 sqft

Exterior 213-223 sqft

Total 1015-1025 sqft



E. & O. E. This is not an offering for sale. Any such offering may only be made with a Disclosure Statement. The developer reserves the right to modify or change plans, specifications, features, materials and prices without notice and at the developer's sole discretion. While we strive for accuracy, all measurements are approximate and are based on the architectural plans. Renderings are conceptual and are intended as a general reference only. Price ranges are estimated with best accuracy at time of publication, exclude taxes, are subject to availability at time of purchase, and are subject to change.

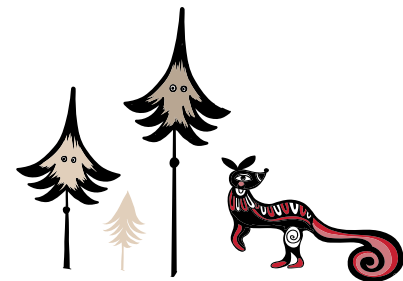
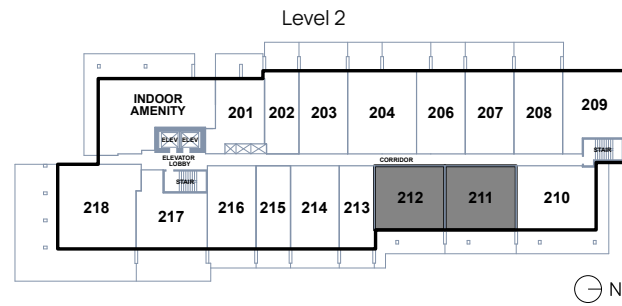
B4

2 Bed, 2 Bath

Interior 805 sqft

Exterior 118-315 sqft

Total 923-1120 sqft



E. & O. E. This is not an offering for sale. Any such offering may only be made with a Disclosure Statement. The developer reserves the right to modify or change plans, specifications, features, materials and prices without notice and at the developer's sole discretion. While we strive for accuracy, all measurements are approximate and are based on the architectural plans. Renderings are conceptual and are intended as a general reference only. Price ranges are estimated with best accuracy at time of publication, exclude taxes, are subject to availability at time of purchase, and are subject to change.

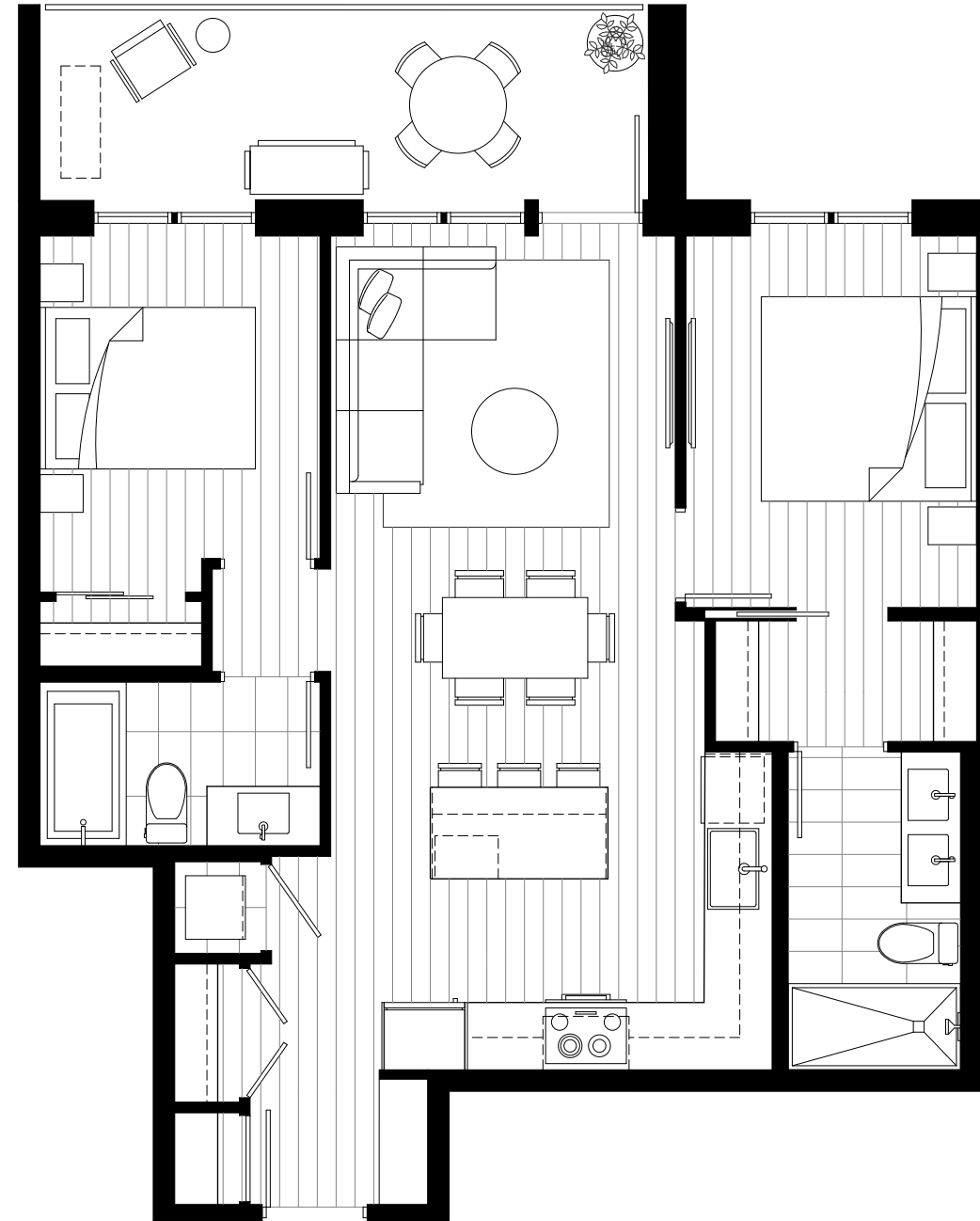
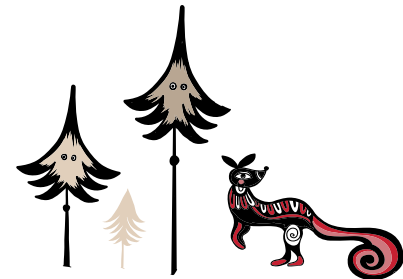
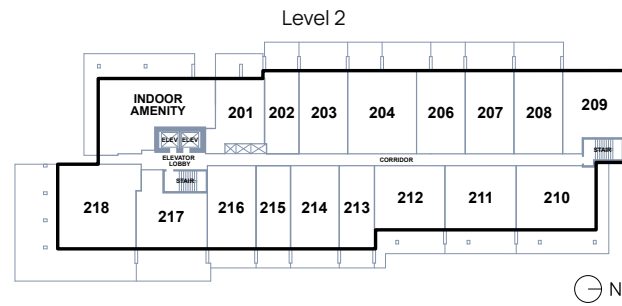
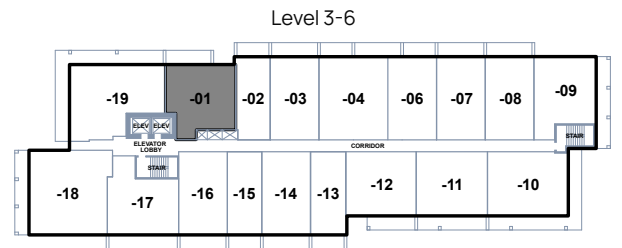
B5

2 Bed, 2 Bath

Interior 843 sqft

Exterior 113 sqft

Total 956 sqft



E. & O. E. This is not an offering for sale. Any such offering may only be made with a Disclosure Statement. The developer reserves the right to modify or change plans, specifications, features, materials and prices without notice and at the developer's sole discretion. While we strive for accuracy, all measurements are approximate and are based on the architectural plans. Renderings are conceptual and are intended as a general reference only. Price ranges are estimated with best accuracy at time of publication, exclude taxes, are subject to availability at time of purchase, and are subject to change.

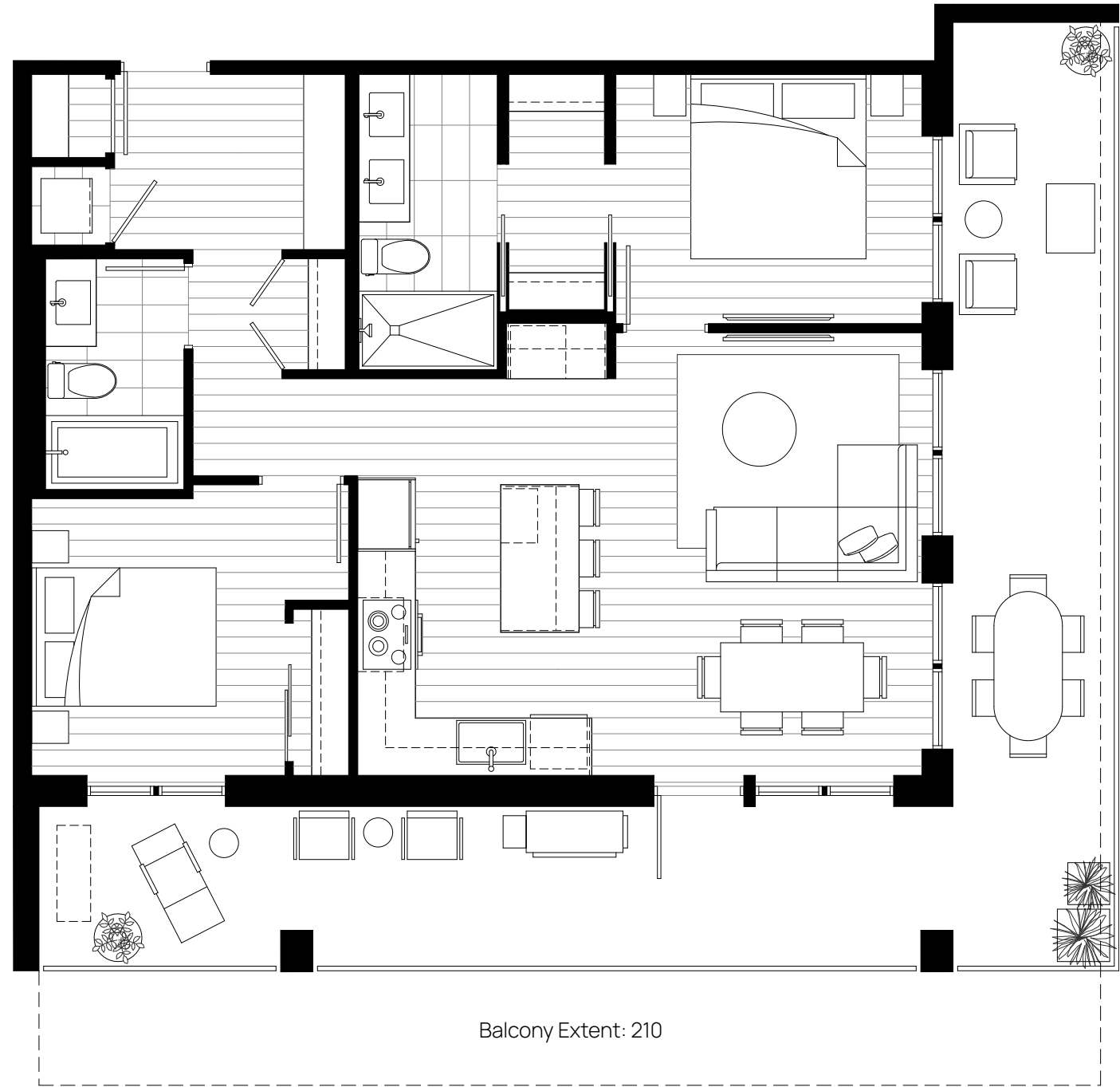
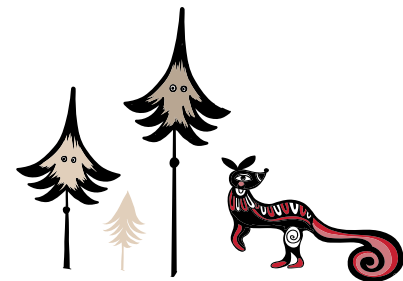
B6

2 Bed, 2 Bath

Interior 902 sqft

Exterior 399-536 sqft

Total 1301-1438 sqft



E. & O. E. This is not an offering for sale. Any such offering may only be made with a Disclosure Statement. The developer reserves the right to modify or change plans, specifications, features, materials and prices without notice and at the developer's sole discretion. While we strive for accuracy, all measurements are approximate and are based on the architectural plans. Renderings are conceptual and are intended as a general reference only. Price ranges are estimated with best accuracy at time of publication, exclude taxes, are subject to availability at time of purchase, and are subject to change.

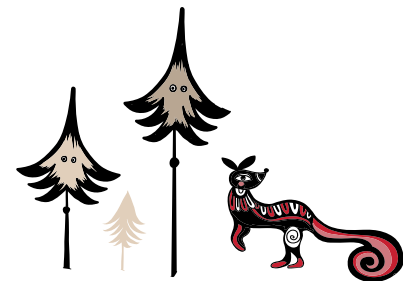
C1

3 Bed, 2 Bath

Interior 1183 sqft

Exterior 463 sqft

Total 1646 sqft



E. & O. E. This is not an offering for sale. Any such offering may only be made with a Disclosure Statement. The developer reserves the right to modify or change plans, specifications, features, materials and prices without notice and at the developer's sole discretion. While we strive for accuracy, all measurements are approximate and are based on the architectural plans. Renderings are conceptual and are intended as a general reference only. Price ranges are estimated with best accuracy at time of publication, exclude taxes, are subject to availability at time of purchase, and are subject to change.

C2

3 Bed, 2 Bath

Interior 1105 sqft

Exterior 206-1312 sqft

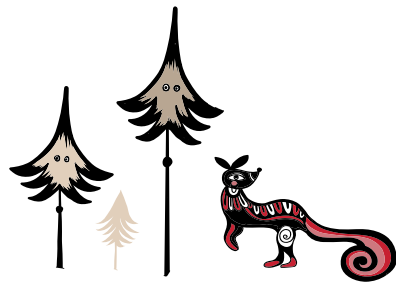
Total 1311-2417 sqft



Balcony Extent: 218



Balcony Extent: 218



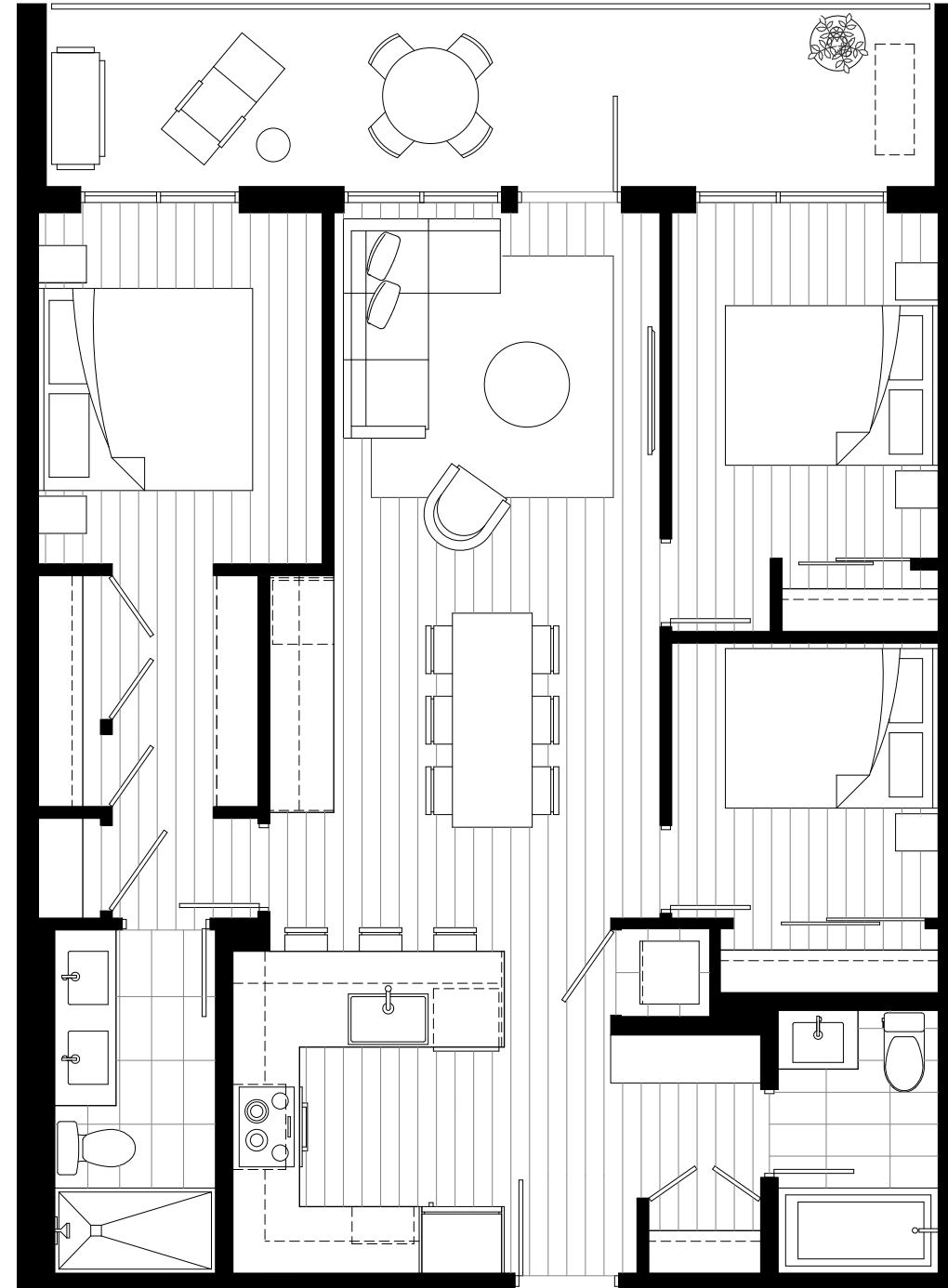
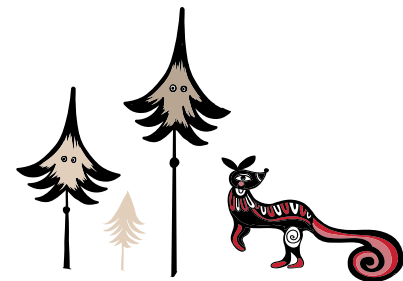
C3

3 Bed, 2 Bath

Interior 995 sqft

Exterior 155 sqft

Total 1150 sqft



E. & O. E. This is not an offering for sale. Any such offering may only be made with a Disclosure Statement. The developer reserves the right to modify or change plans, specifications, features, materials and prices without notice and at the developer's sole discretion. While we strive for accuracy, all measurements are approximate and are based on the architectural plans. Renderings are conceptual and are intended as a general reference only. Price ranges are estimated with best accuracy at time of publication, exclude taxes, are subject to availability at time of purchase, and are subject to change.

MORE THAN REAL ESTATE

You don't come to RED, you belong. You don't just own at RED, you live it proudly. When you call RED Mountain home, you belong to a mountain, a neighbourhood, a town, and a passionate community in love with mountain life.

The Daly can be your full- or part-time home, or it can be a mountain basecamp that you choose to rent out for short or longer periods. At The Daly, a RED Mountain Home, the choice is yours.

We look forward to having you join us here. To find out more, visit us at www.redmountainhomes.ca or email info@redmountainhomes.ca.

REAL LIFE. REAL ADVENTURE.
REAL COMMUNITY.
RED MOUNTAIN HOMES.



OAKWYN REALTY

ace

Project Marketing
Group

E. & O. E. This is not an offering for sale. Any such offering may only be made with a Disclosure Statement. The developer reserves the right to modify or change plans, specifications, features, materials and prices without notice and at the developer's sole discretion. While we strive for accuracy, all measurements are approximate and are based on the architectural plans. Renderings are conceptual and are intended as a general reference only. Price ranges are estimated with best accuracy at time of publication, exclude taxes, are subject to availability at time of purchase, and are subject to change.



RED MOUNTAIN HOMES